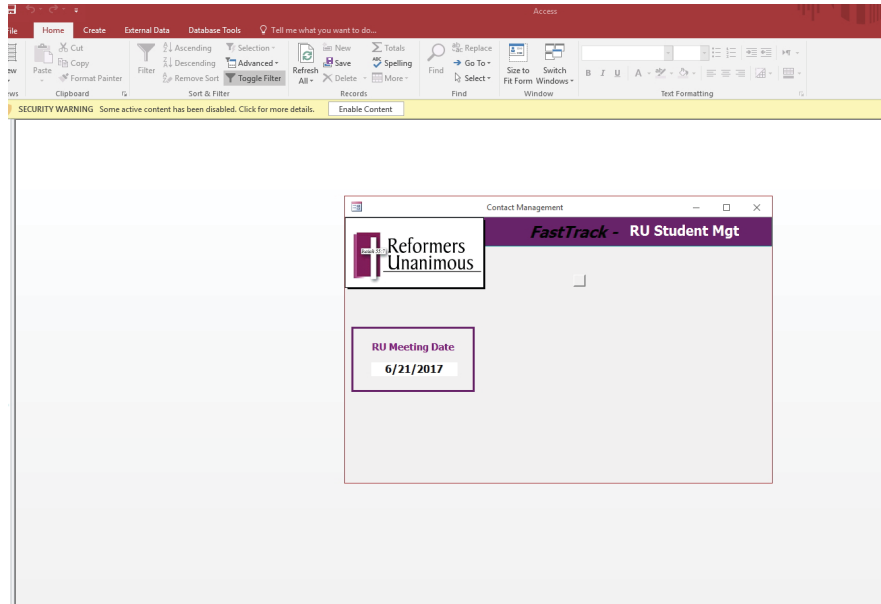


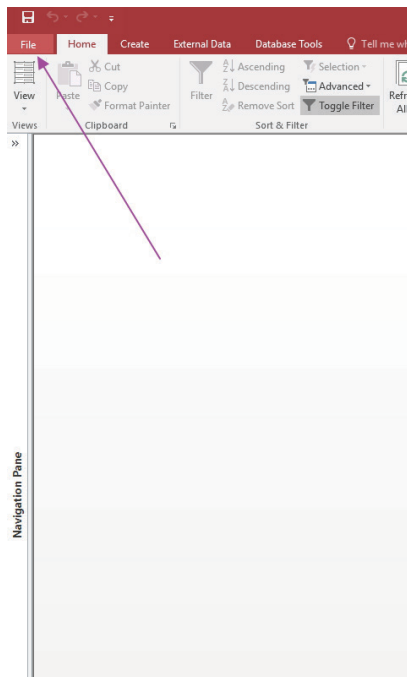
FastTrack Open Errors

Windows 7, and 10, Microsoft Access 2016

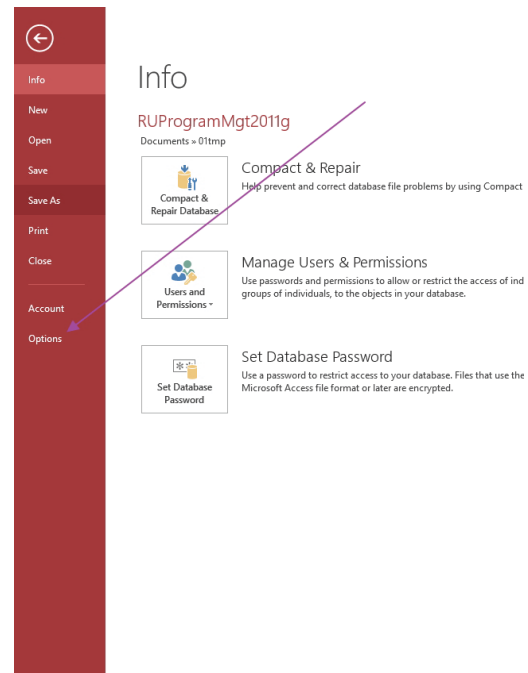


Your Screen with an Open Error

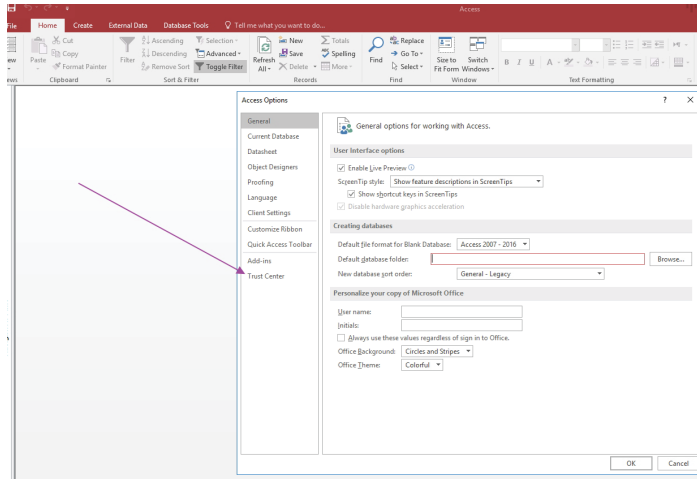
Step One - File



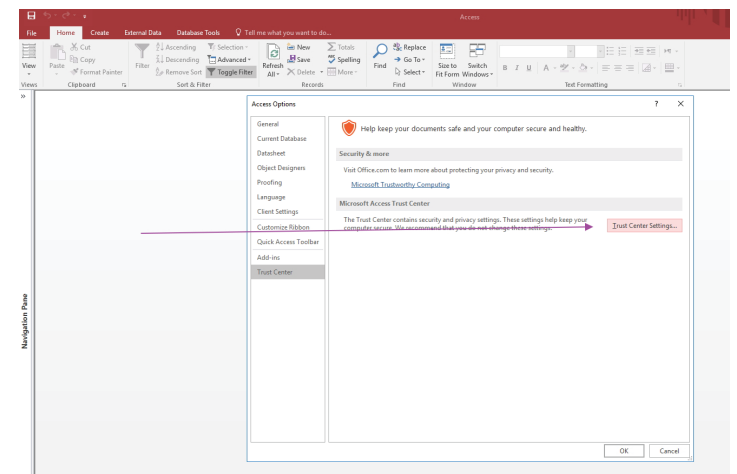
Step Two - Options



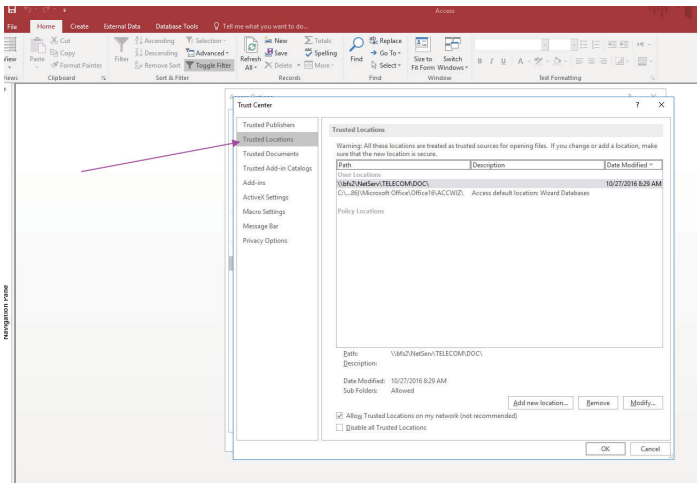
Step Three - Trust Center



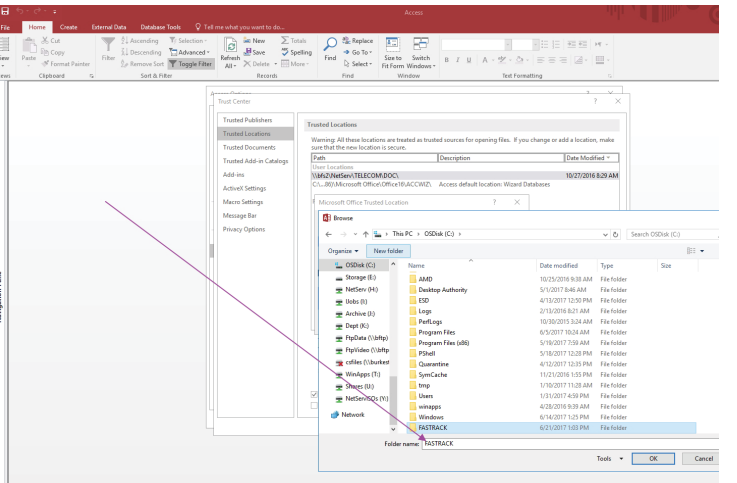
Step Four - Trust Center Settings



Step Five - Trust Center Locations



Step Six - Browse to Locations



Final Step - Hit OK, then OK, and Ok DONE.

